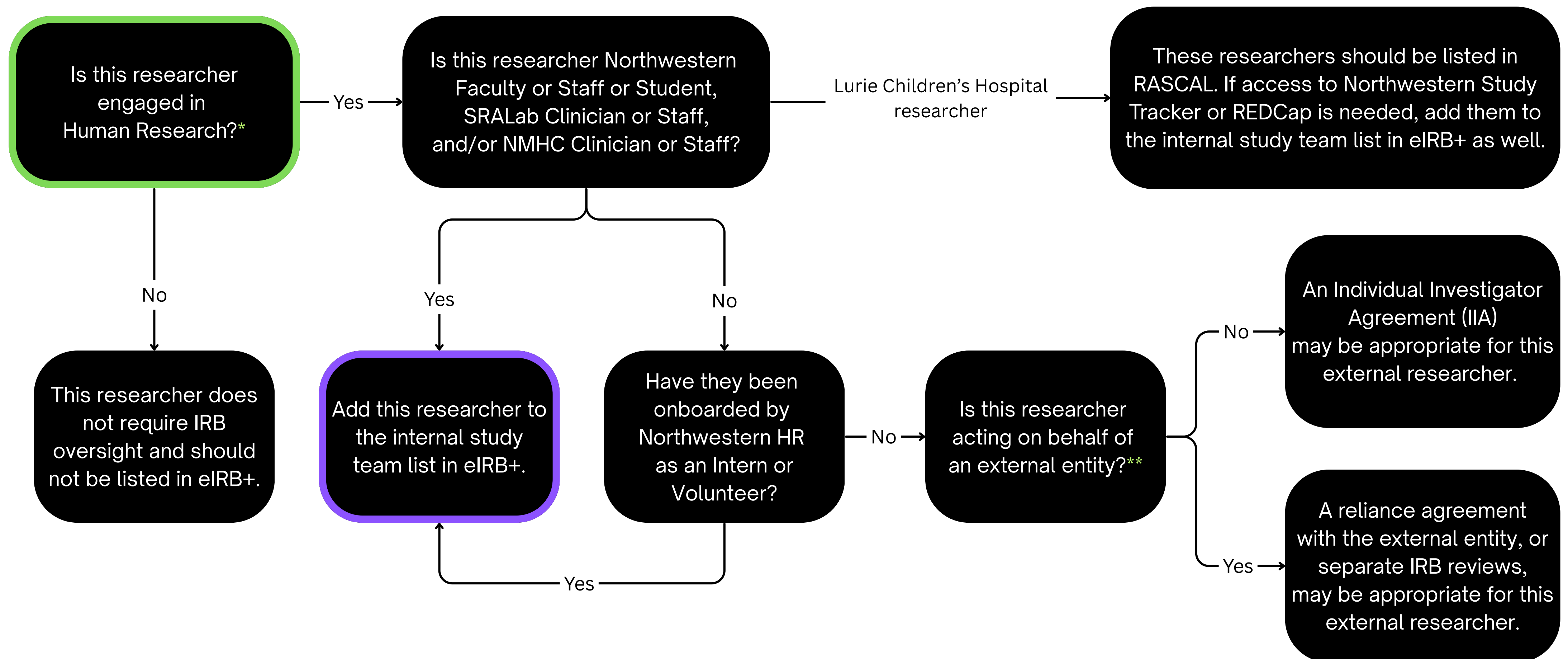


CONSIDERATIONS FOR ADDING STUDY TEAM MEMBERS IN eIRB+



*Review the Human Research Determination Form for additional guidance.

**Individuals must work with the institution they are acting on behalf of to determine if they or the institution is engaged per OHRP's definition of engagement. Review the Engagement Determination Worksheet for additional guidance.