

System to System: Connections between Northwestern's eRA Systems and the Transition to CERES

March 15, 2023



CERES

What is CERES?

The Centralized Electronic Research System, a more streamlined and modernized system to support the growing research enterprise

Overview of

Sponsored Research Administration Transformation Program (SRATP)

Northwestern is enhancing the technology resources that support its research enterprise. The program's goals are twofold: to implement a new enterprise sponsored research administration management system and to deliver a revamped analytics environment required to support business functions. These aims include **replacing InfoEd** with Huron Grants and Agreements, a change intended to strengthen processes, maximize efficiency, and support continued growth of Northwestern research. This effort is a partnership between Northwestern Sponsored Research and Northwestern Information Technology.

<https://sponsoredresearch.northwestern.edu/sra-transformation/index.html>



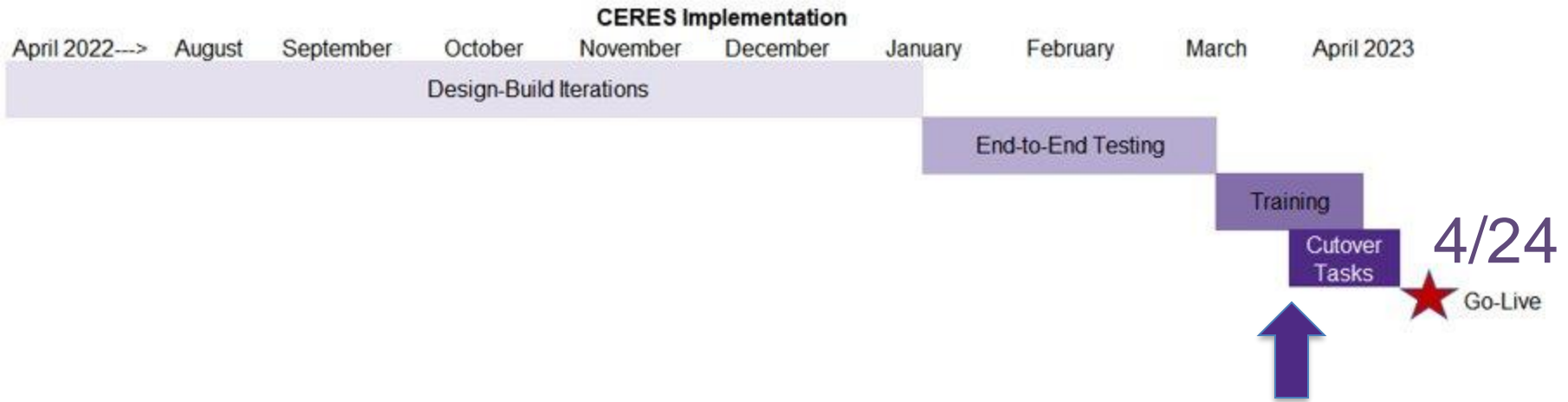
SRATP CERES Implementation



-0:37



Program Timeline



CERES

Benefits of CERES

- ✓ One-stop shop for the overall sponsored project lifecycle
- ✓ More complete information enables smoother review processes
- ✓ PI certification can occur while funding proposal is in draft or department review
- ✓ Workflow progress will be easily visible, bringing transparency to processes



CERES

Basic Concepts & Navigation: Structure & Status



SINGLE ID

Currently, Proposals and Awards are tracked as one item with one identified, known as the SP Number.

MULTIPLE IDs

Proposals, awards, and agreements are distinct elements within CERES, each with a separate unique identifier, tied together and easy to navigate between on related records.

STATUS DIFFICULT TO FIND

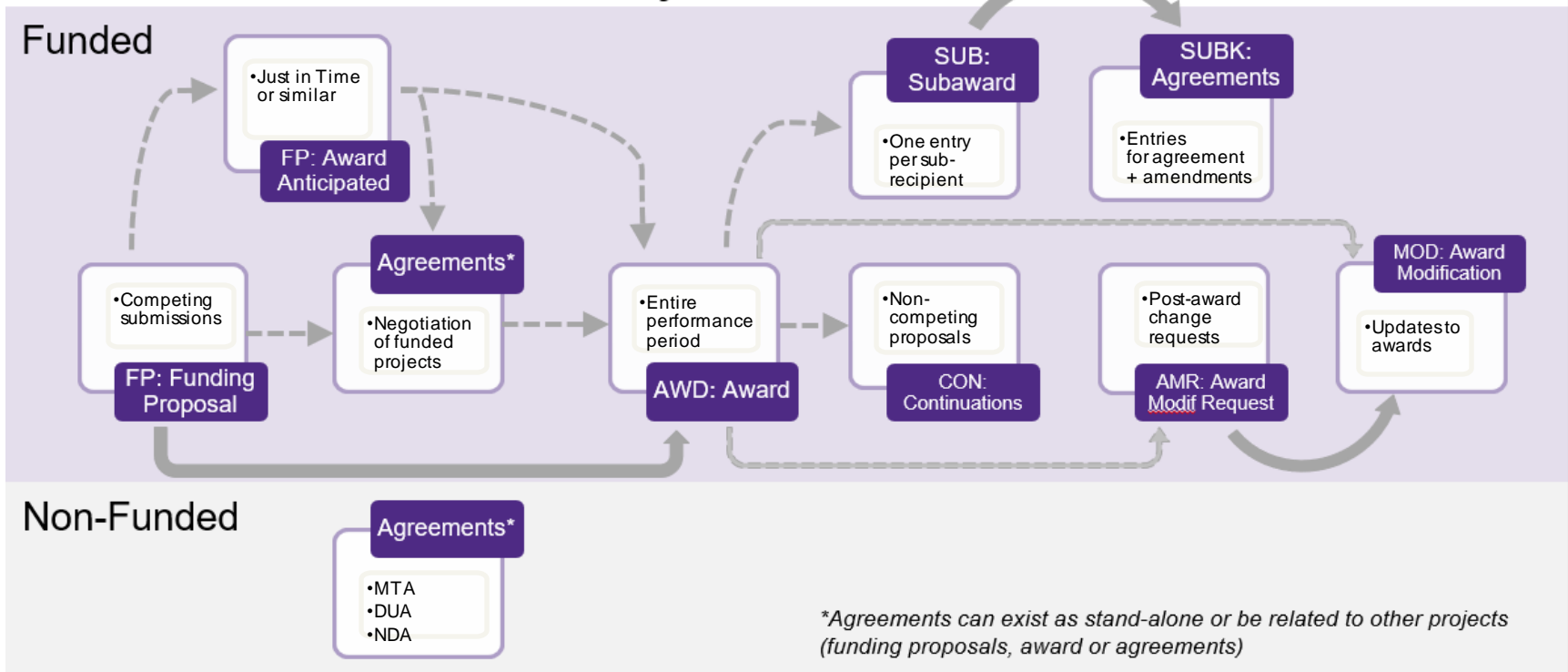
The process of viewing workflow status requires users to navigate to multiple screens depending on context.

VISUAL WORKFLOW

Insight into workflow progress will be easily visible in CERES, bringing transparency to processes. The drill downs work similarly from screen to screen.



CERES Across the Lifecycle





CERES

Grants Module		Agreements Module	
Pre-Award	Post-Award	Funded	Non-Funded
<ul style="list-style-type: none">•Funding Proposals•SF424•Budget	<ul style="list-style-type: none">•Awards•Award Modification Request•Award Modification•Subaward	<ul style="list-style-type: none">•Clinical Trial•Sponsored Research Agreement•Subcontract	<ul style="list-style-type: none">•MTA•DUA•NDA•LOI•MOU•Master•Collaboration



CERES

Agreements with Funding

Bilateral Awards

- Sponsored Research will create an Agreement record once a notice of award arrives if needed

Industry Clinical Trials

- Departments will create Funding Proposal record and budget, which will route for approval
- Once the Funding Proposal is approved, Departments will create related Agreement record, with questions specific to the clinical trial
- Negotiations begin once Agreement record is routed

Once fully executed, Sponsored Research will create an Award record and complete the setup.

Integrated with eIRB+

Budgets SF424 Summary History Reviewers Attachments **Related Projects** ...

Related Projects

Filter by [?] ID

✕ Clear All

ID	Name	Owner	Organization	Project Type	Project Status	Modified Date
No data to display.						

◀ page of no results ▶ / page

Related IRB Protocols

Protocol Number	Status	Approved Date	Approved Start Date	Approved End Date	Review Category	Exemption Number	PI Name	Protocol Title
-----------------	--------	---------------	---------------------	-------------------	-----------------	------------------	---------	----------------



CERES

Resources to Learn More

CERES 101 is here!

The Northwestern research community can learn more about CERES via the [CERES 101](#) Computer-Based Learning course. CERES 101 includes an overview of what the system is, how it is used, and how CERES benefits all users. This 65-minute, on-demand course takes learners on a tour the system and teaches you where and how to find records in the system and related information. CERES 101 is available via MyHR Learn. [REGISTER NOW](#)

Concepts Overview

Before viewing CERES 101, step through the following overviews of the key CERES concepts and workspaces: the funding proposal, agreements, awards, and subawards. ([CERES Training](#) page)



CERES

Questions?

SRATransformation@northwestern.edu

eIRB+ Integration

Financial Information Section of IRB Application

Sources of Funding and Other Support

Identify each organization supplying funding for the study - if your study only has funding/support from Northwestern University you must still click on the "+Add" button below and indicate in question 2 the specific NU department/division that is providing funding/support for this study.

1. * Identify each organization supplying funding for the study:

+ Add

Funding Source	Sponsor's Funding ID	Originating Sponsor	Grants Office ID	InfoED Number	Attachments
----------------	----------------------	---------------------	------------------	---------------	-------------

There are no items to display

Adding Funding Source

N eirbplus-test.northwestern.edu

Add Funding Source

If this project has external funding, respond "Yes" to Question 1 and select the funding source from the first field using the [...] button. You will then see a pop-up where you can select the funding associated with the study. If you do not see the correct funding select "Click here for more search options" and you will have the opportunity to search and filter by various fields. Once selected Questions 2 through 5 will automatically populate.

If this project has internal funding, respond "No" to Question 1 and select your Northwestern department/division in Question 2.

If this project has funding routed from SRALab or Lurie Children's Hospital, select "No" for Question 1 and attach supporting information in Question 5.

1. * Is this research funded by an external sponsor (an agency, department, foundation or other funding source external to Northwestern University) that has awarded funding to NU, or through a sub-award?

NOTE: If your project has external funding, but that funding did not go through NU (e.g. SRALab or Lurie Children's is managing the grant), please select "No" to this question.

Yes No [Clear](#)

* CERES ID:

2. * Funding/Support Organization: 

Direct Sponsor:

Prime Sponsor:

Benefits of Integration

- Sponsored Research (SR) staff have access to current IRB submission information.
- COI Office can conduct an appropriate review.
- Funding information populates correctly in the IRB approval letter.
- For older studies, recommend updating with next modification.

Questions?